

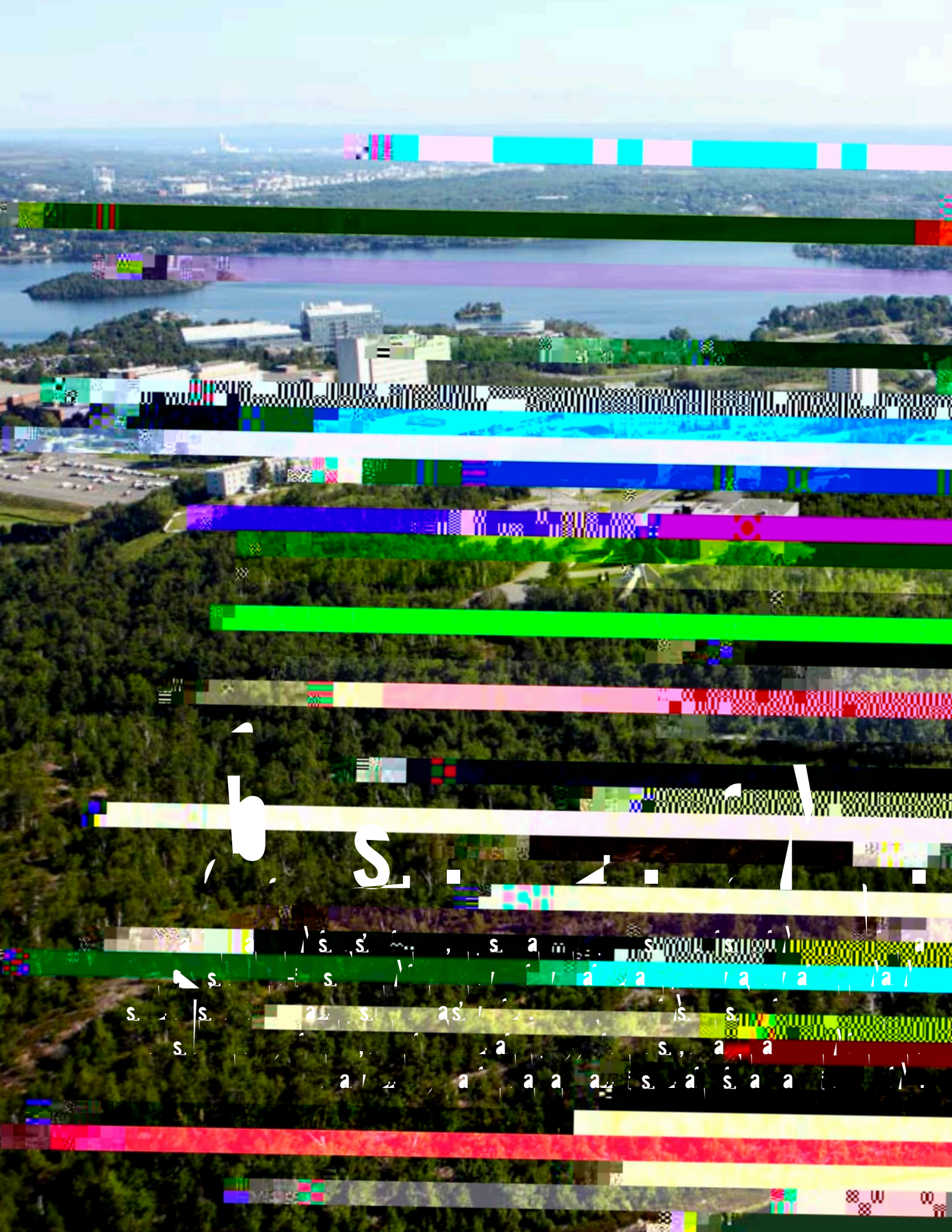


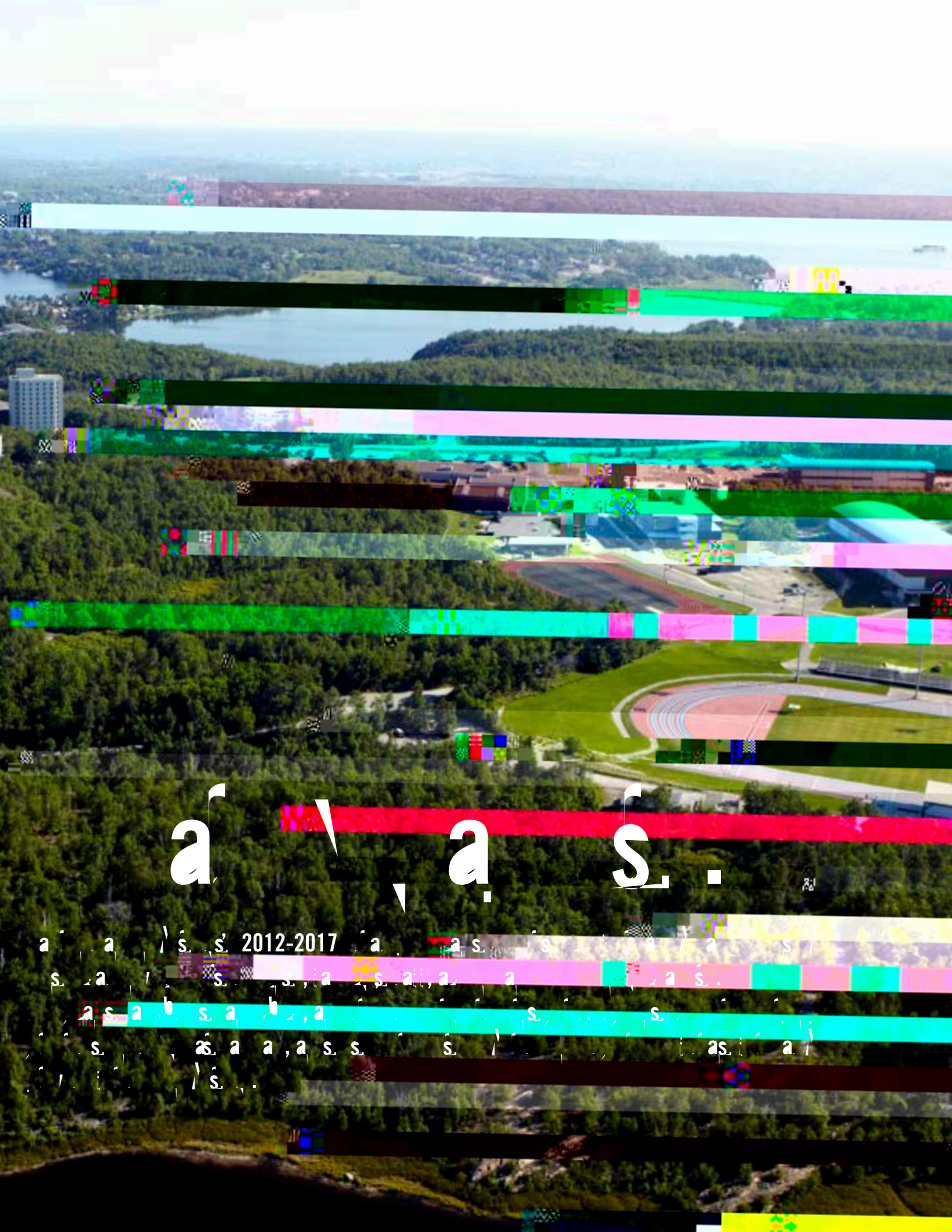
2012  
2017



Laure... nive... y  
Université Laurentienne

u... u... B... ( ) C...  
a... a... a... a... a...





a a s .

a a s s 2012-2017 a a s s a a s s  
s a s a s a a a a s s  
a s a b s a b a s s  
s a a a a s s s a s a  
s s

At Laurentian, we value:

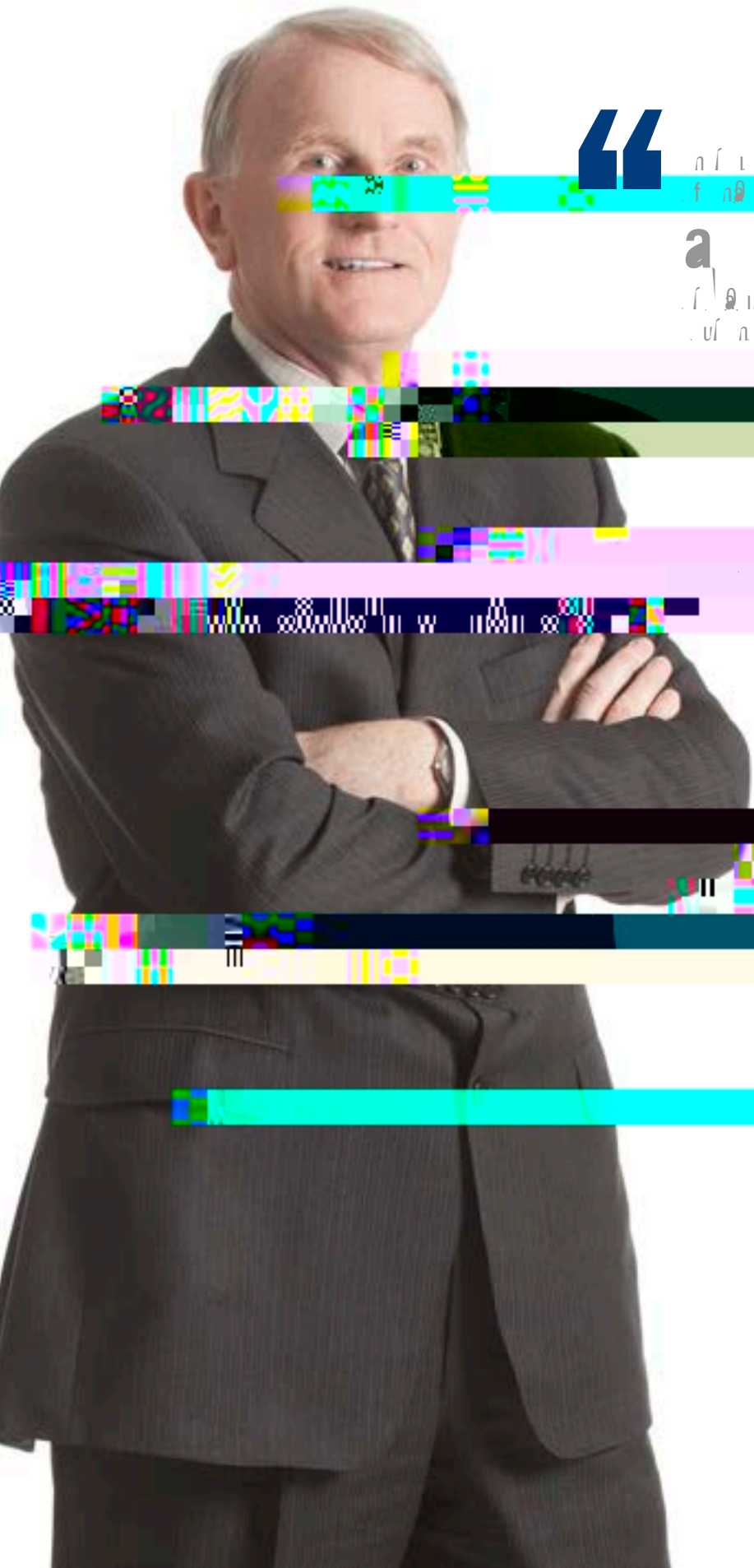
- Students first
- Excellence
- Academic freedom
- Mnaadendmiwin (respect)
- Alumni
- Diversity
- Debwewin (truth)
- Integrity
- Inclusiveness



**2012**  
**2017**





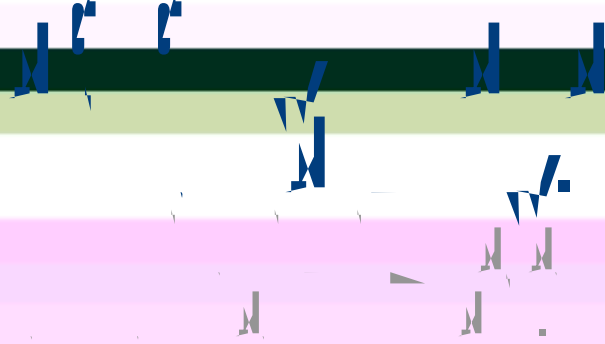


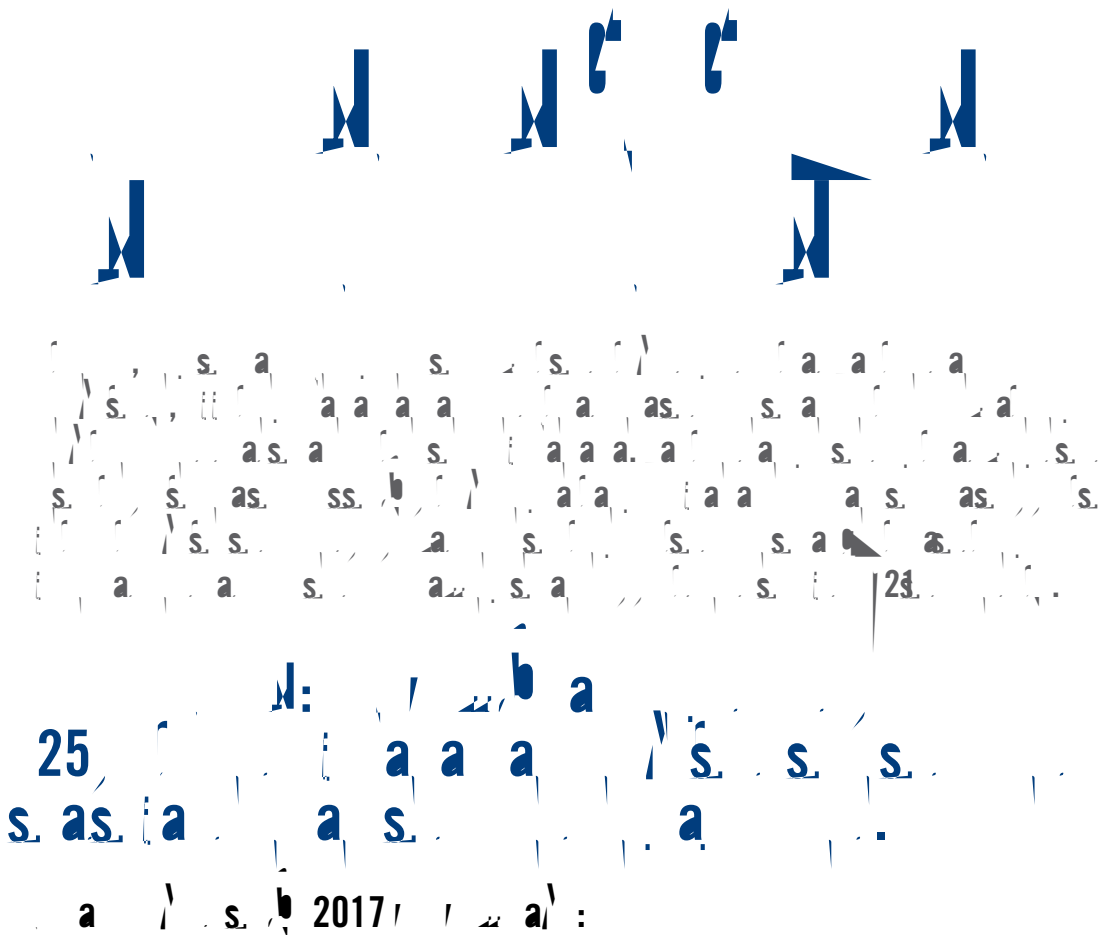
“

... in the ...  
... in

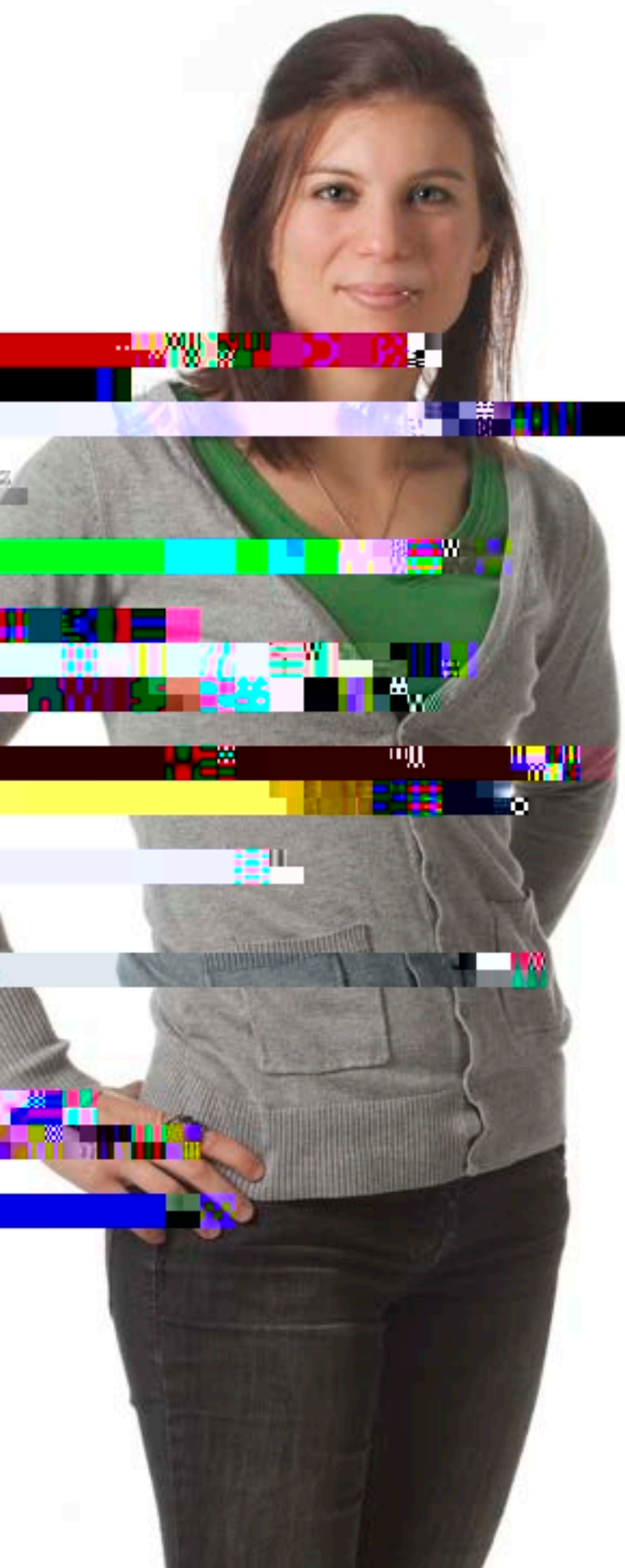
a a ,

...  
...  
...





- Integrated classroom learning with real-world experience through



s. f. a  
 s. s. a  
 s. a

2017, 1. a):  
 Ennen f...  
 fu... on...  
 ...  
 ...  
 ...





Research articles published in 2017 (12 articles):

- Raised total annual research dollars from \$21.9 M in 2010 to \$30 M, including 10 new faculty positions, including 10 in the humanities totaling from \$314,400 in 2011 to \$400,000

• 100% of research articles published in 2017 were funded by the university



“ a s .

a b s .

E n n u n L a u í n i a n i s . i n f f i n

’ n n n n n

J H G U  
CA ADA \*E EA\*CH CHAI\*F \*  
\*E EDA NA IC E  
DI\*EC \*, ALE LI I G I H LAKE CE \*E

2017, / a :  
È a n L a u í n i a n i s . i n f f i n  
i n n u n L a u í n i a n i s . i n f f i n  
a l i n i n L a . C n í .



S. 11

♩: ♭

♩ - as

♩ : a a ♩ s' a ;

♩ ss ♩ a s ♩ s s ♩ s ; ♩ a

♩ a ♩ a ; ♩ as ♩ a s a

♩ a ; ♩ s a ♩ a s ; ♩ a

♩ s s ; ♩ , ♩ a a s ;

♩ a ♩ a ; a a .



“

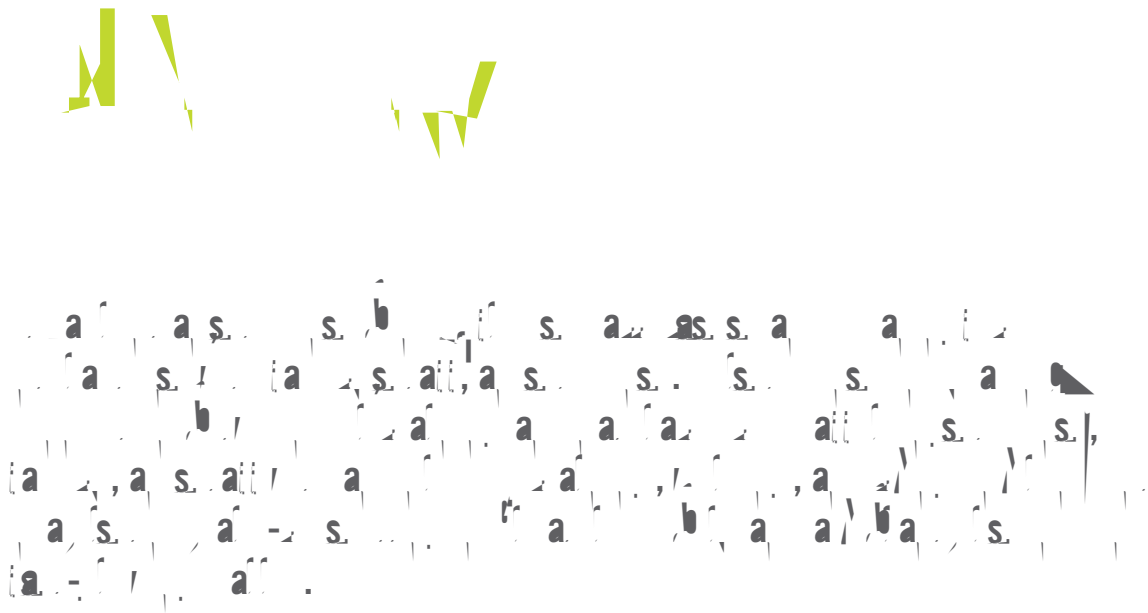


En 2017, le budget de la Fédération des Investisseurs de la Région de la Capitale est de 1,2 milliard de dollars. Le budget de la Fédération des Investisseurs de la Région de la Capitale est de 1,2 milliard de dollars.



En 2017, le budget de la Fédération des Investisseurs de la Région de la Capitale est de 1,2 milliard de dollars. Le budget de la Fédération des Investisseurs de la Région de la Capitale est de 1,2 milliard de dollars.

En 2017, le budget de la Fédération des Investisseurs de la Région de la Capitale est de 1,2 milliard de dollars. Le budget de la Fédération des Investisseurs de la Région de la Capitale est de 1,2 milliard de dollars.



Laurentian University 2017/18 Strategic Plan:

- Strategically increased enrolment from 7,200 FTE (2011) to 8,300 FTE while increasing the average entry grade from 80.8% to 83%
- Modernized the Sudbury campus, including classrooms designed flexibly
- Increased proportion of international students from 6.1% in 2011 to 8%
- Increased numbers of students who have enriched learning experiences
- Become one hundred percent (100%) wireless
- Established Laurentian as a destination for Francophone and Immersion
- Increased enrolments of First Nations, Inuit, and Métis students
- Opened a “front door/welcoming centre” with effective signage in French, English, and

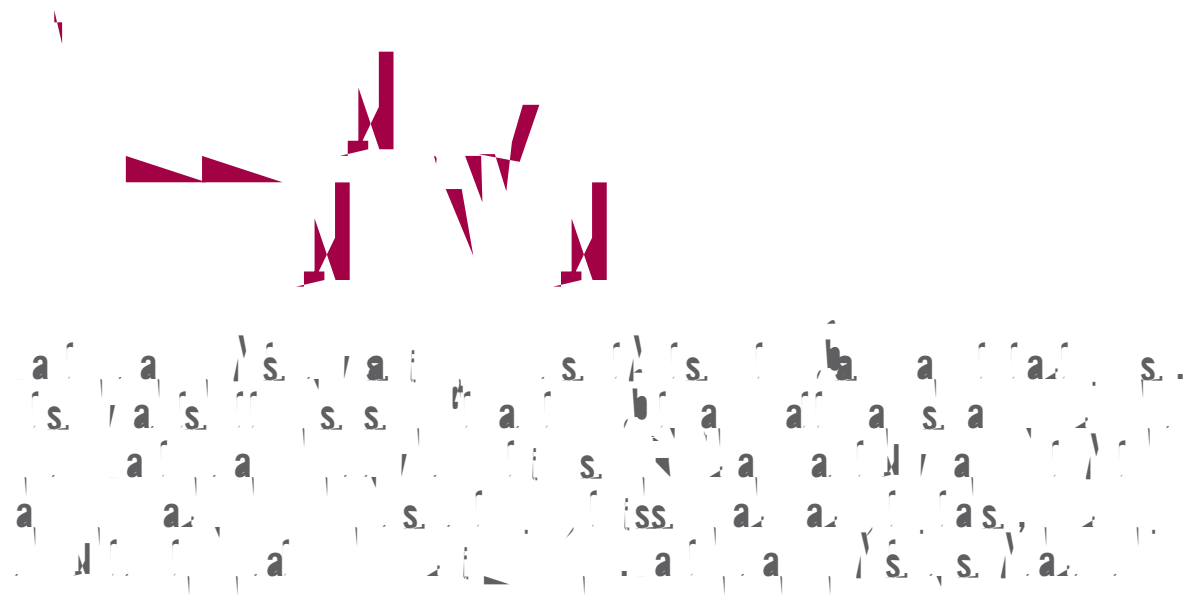


“ Sabias que el mundo se va a acabar el 2012? Yo no. Yo sabía que iba a acabar el 2017, porque yo sabía que iba a morir.”

Muchas veces me he preguntado si el mundo se va a acabar en el 2017. Yo no lo sé. Yo sé que voy a morir el 2017, porque yo sé que voy a morir el 2017.

LIELA D\*  
DI\*EC\* FF\*A C H EC LLAB\*AI  
A D A\* E\* HI

**2017, ¿qué va a pasar?**  
 ¿Crisis económica? ¿Guerra? ¿Terrestres?  
 ¿Fin de la humanidad? ¿Fin del mundo?  
 ¿Fin del universo? ¿Fin del tiempo?  
 ¿Fin de la vida? ¿Fin de la muerte?  
 ¿Fin de la existencia? ¿Fin de todo?



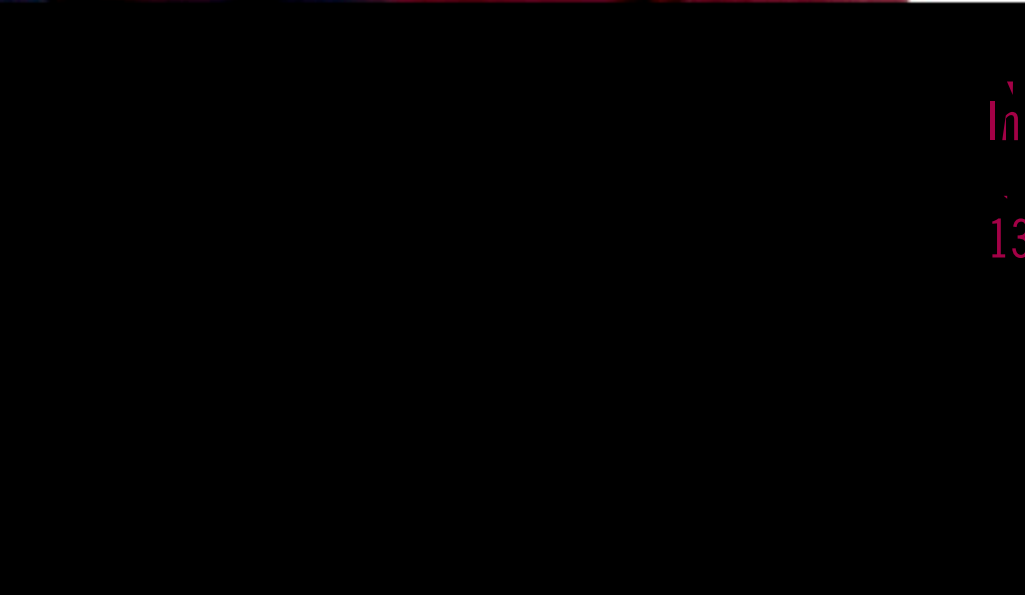


“

s' a a a s!  
a s' a s.  
n n f i t n i n . f . f u . f . u . f . u . f . u .  
A . f . i n d f . u . n . a n . a n . u . . . .

**N** **N**  
f . f . . . . f . f . . f f f i n . . . , f a u t .  
f f . a . u . u f a d . . f . u n . . . . n .  
f f . . n . . f i n . .

AA\* - IE\*\*E  
G\*ADNA E NDE , HI \*



2017, ( ) a ) :  
In f a In i n u .  
n n in . u f . f f .  
13% of all courses to 16%.





The company's performance is a key factor in determining customer satisfaction. The company has consistently maintained a high level of satisfaction, with 75% of respondents reporting that they are satisfied with the company's performance. This is a testament to the company's commitment to excellence and its focus on providing high-quality products and services.

The company's performance in 2017 is a testament to its commitment to excellence.

- Continued to support our high-



, 2017, / / 2 a' :

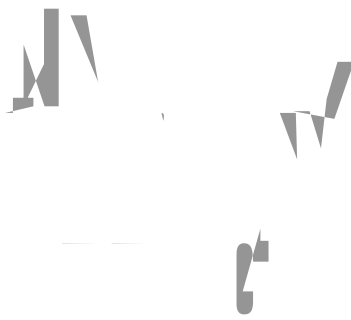
Financial statements of the University of Ontario  
and its constituent colleges, and of the  
University of Western Ontario, for the year  
ended 31 March 2017

**Financial Statements**: **Income Statement**  
**Balance Sheet**  
**Statement of Financial Position**

**Statement of Financial Position as at 31 March 2017**

- Increasingly engaged faculty and staff, as measured in 2013, 2015 and 2017
- Shared ideas about best practices for working together and annual events  
not in line with the overall strategy
- Integrated fully all operational functions into one data warehouse by  
using a single platform (LEA)
- Ensured ongoing \$ million of savings

en



■

L